



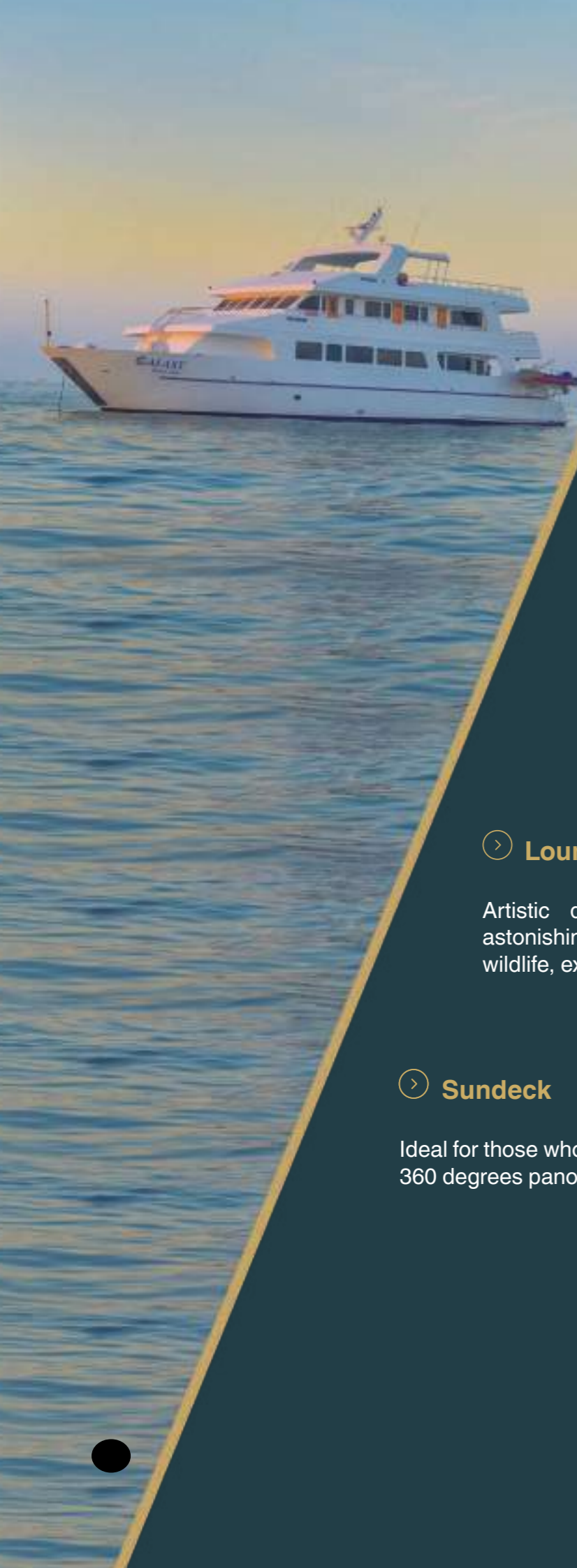
GALAXY
Galapagos Cruises

Amazing Expeditions!

davide guglielmi
contemporary art of travel

#collectingmoments

Handbook



Social Areas

> Dining room

A personalized, intimate experience in our spacious dining room, where delicious meals are prepared by our professional chef.

> Lounge

Artistic decoration based on the astonishing array of the Galapagos wildlife, expose by a local artist.

> Sundeck

Ideal for those who love to relax with a 360 degrees panoramic view.



Dining Room



Living Room



Sundeck



Cuisine

Technical Et Safety Features



> Dimensions

Length: 35 mts / 114.82 ft
Beam: 7.60 mts / 24.93 ft

> Performance

Cruising speed: 12 knots

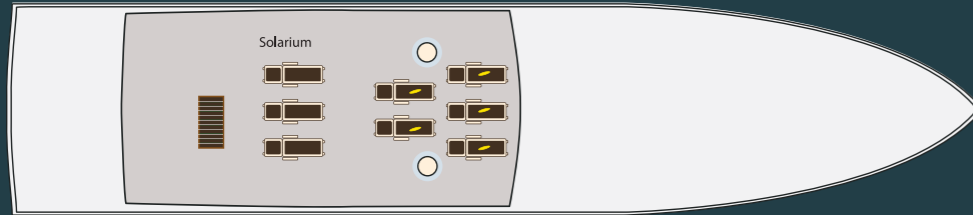
> Capacity

16 passengers
8 crew members + 1 bilingual guide

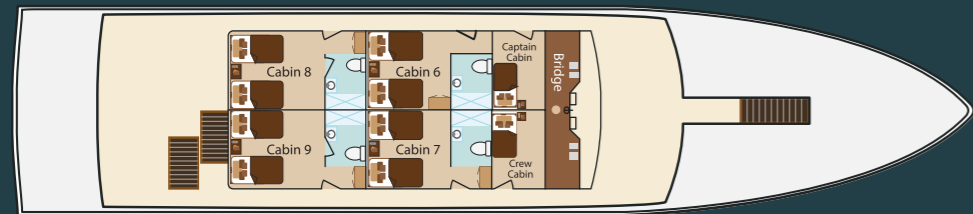
> Operation and consumption

Engines: 2 350 HP
Electric power: 110V and 220V

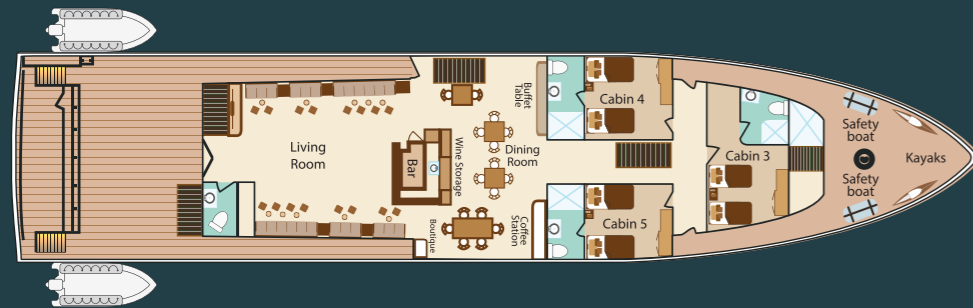
Deck Plan



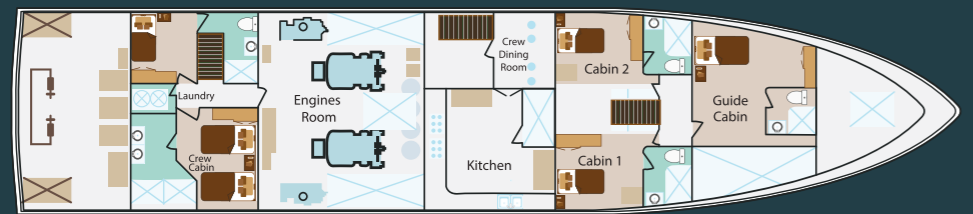
SUNDECK



UPPER DECK



MAIN DECK



LOWER DECK

Salvage and Security Equipment

We are responsible for everybody onboard, that is why safety is our top priority matter.



- ✓ 6 lifebuoys
- ✓ 2 survival rafts, 15 passengers each
- ✓ 30 life jackets for passengers
- ✓ 20 life jackets for crew
- ✓ Flare gun, hand lights, smoke signals and other SOS visual signals
- ✓ Fire detectors and complete fire protection system
- ✓ Fire hoses
- ✓ CO2 extinguishers
- ✓ External automated defibrillator
- ✓ Fire suits