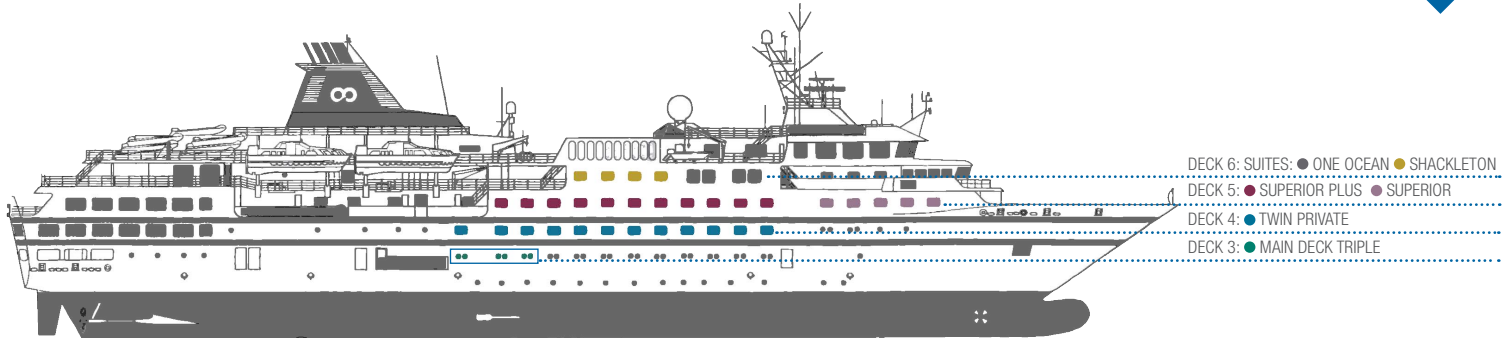


RCGS RESOLUTE VESSEL DIAGRAMS & CABIN OVERVIEW

daVIDE gUGLIELMI
contemporary art of travel
#collectingmoments

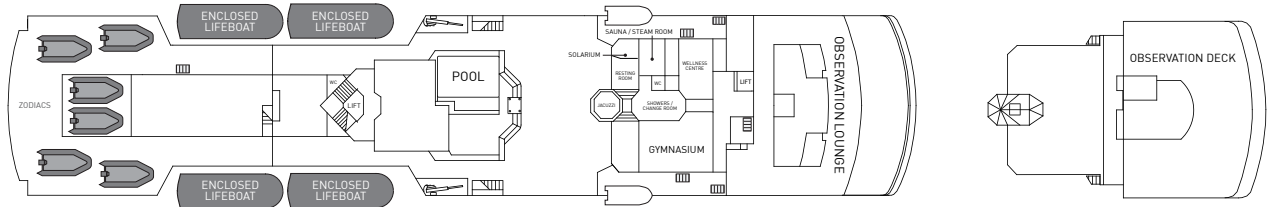


Built in Rauma Finland in 1993, *RCGS Resolute* offers a Lloyds 1AS ice class (the highest ice rating possible for passenger ships), external stabilizers, incredible comfort and a variety of spacious interior and exterior viewing areas. The most recent refurbishment of the vessel included a complete cabin redecoration featuring new carpet and furniture throughout. One Ocean Suites feature queen beds. In all other cabins, the bed configuration is available in either a queen or two single beds (triple cabins feature two single beds and an additional lower single berth). All cabins include: private washroom, ample storage, writing desk and chair, fridge, flat screen entertainment system with in-house intranet, sectional corner lounge, 100% cotton OOE bathrobes, custom blend natural Canadian made amenities, black out blinds, complimentary water bottle and in room tea and coffee station. Superior cabins and above feature additional inclusions. For all guests, a full expedition gear package is included and features a waterproof jacket and pants, rubber boots, Nordic trekking pole, binoculars and water proof backpack.

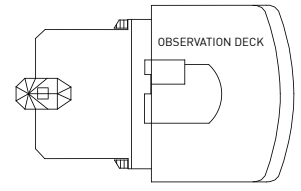


● One Ocean Suite ● Shackleton Suite ● Superior Plus Cabin ● Superior Cabin ● Twin Private Cabin ● Triple Private Cabin

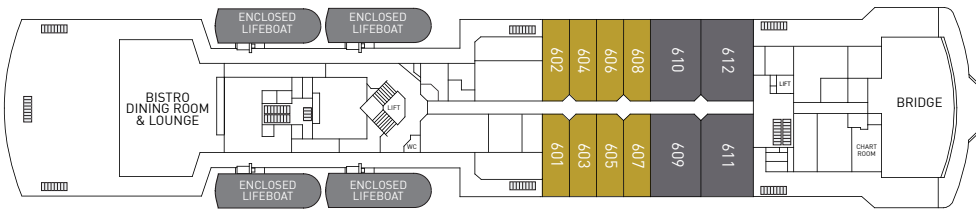
DECK 7



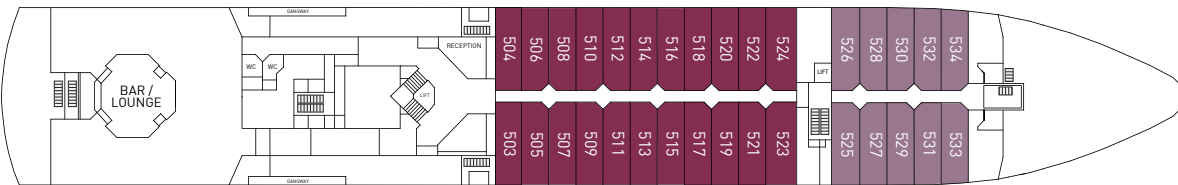
DECK 8



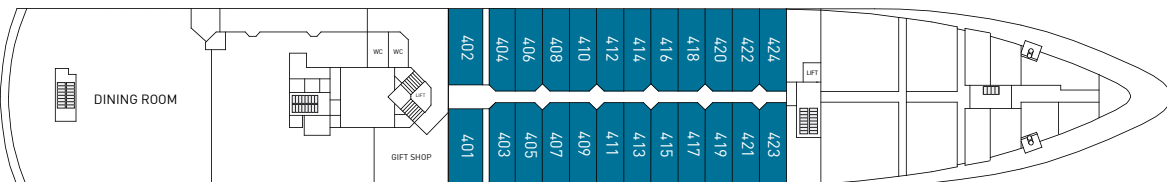
DECK 6



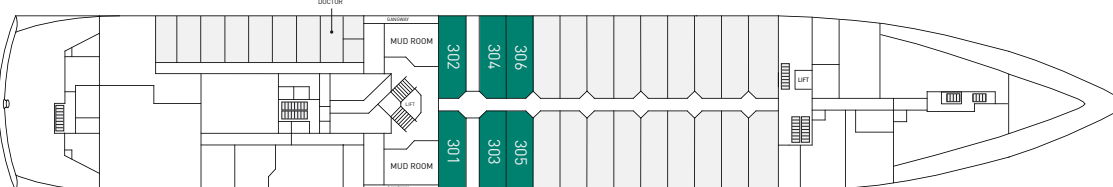
DECK 5



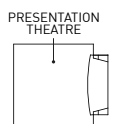
DECK 4



DECK 3



DECK 2



IRCGS RESOLUTE > VESSEL DIAGRAMS & CABIN OVERVIEW



ONE OCEAN SUITE

DECK 6 | CABINS: 609–612 | SIZE: 44m²

The One Ocean Suites are situated on Deck 6 and offer an indulgent amount of space. Sleeping quarters feature a queen size bed with upgraded linen/pillows. Included is a comfortable sectional lounge with matching club chairs, a large desk, expansive floor to ceiling cabinetry, and spacious washroom facilities with both a shower and bathtub. A flat screen entertainment system is also included. These suites provide easy access to the ship's bridge, the bistro and outdoor observation spaces. The panoramic observation lounge and recreation facilities are located nearby on Deck 7.

See the cabin specific Fact Sheet for the full list of amenities and inclusions specific to the One Ocean Suite.

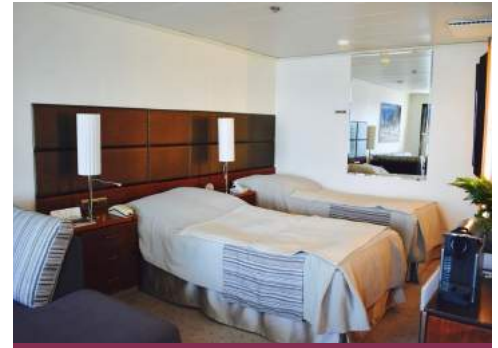


SHACKLETON SUITE

DECK 6 | CABINS: 601–608 | SIZE: 22m²

The Shackleton Suites are situated on Deck 6. Suites include the comfort of a sectional lounge, writing desk, substantial floor to ceiling cabinetry, and washroom facilities with shower. A flat screen entertainment system is also included. Sleeping quarters feature the option for either a queen or two single beds with upgraded linen/pillows. These Suites provide easy access to the ship's bridge, the bistro and outdoor observation spaces. The forward panoramic observation lounge and recreation facilities are also located nearby on Deck 7.

See the cabin specific Fact Sheet for the full list of amenities and inclusions specific to the Shackleton Suite.



SUPERIOR PLUS CABIN

DECK 5 | CABINS: 503–524 | SIZE: 22m²

Superior Plus cabins are located midships on Deck 5. They are spacious and well appointed with the option for either a queen or two single beds. A comfortable lounge is placed by the large picture window, writing desk and chair, ample floor to ceiling cabinet storage and private washroom facilities with shower. A flat screen entertainment system is also included. Centrally located on the ship, these cabins provide easy access to the aft observation lounge featuring 180 degree views and the ship's dining areas.

See the cabin specific Fact Sheet for the full list of amenities and inclusions specific to Superior Plus cabins.



SUPERIOR CABIN

DECK 5 | CABINS: 525–534 | SIZE: 22m²

Located forward on Deck 5 the Superior cabins have the option for either a queen or two single beds. Features include a comfortable lounge adjacent to the large picture window, writing desk and chair, ample storage and private washroom facilities with shower. A flat screen entertainment system is also included. These cabins provide easy access to the forward stairs leading up to the bridge on Deck 6 and the forward observation lounge located on Deck 7.

See the cabin specific Fact Sheet for the full list of amenities and inclusions specific to Superior cabins.



TWIN PRIVATE CABIN

DECK 4 | CABINS: 401–424 | SIZE: 22m²

Spacious and well appointed, these cabins are situated on Deck 4 and have the option for either a queen or two single configured beds. Features include a comfortable lounge adjacent to the large picture window, writing desk and chair, ample storage and private washroom facilities with shower. A flatscreen entertainment system is also included. These cabins provide easy access to the main dining room on the ship as well as the gift shop.

See the cabin specific Fact Sheet for the full list of amenities and inclusions specific to Twin Private cabins.



TRIPLE PRIVATE CABIN

DECK 3 | CABINS: 301–306 | SIZE: 22m²

These cabins are a popular choice for solo travellers willing to share, a family, or a group of friends travelling together. Located on Deck 3, cabins feature three single beds, one of which can convert to a convertible sofa and lounge during the day. These cabins feature writing desk and chair, ample storage and private washroom facilities. A flatscreen entertainment system is also included. These cabins provide easy access to the expedition room and gangway.

See the cabin specific Fact Sheet for the full list of amenities and inclusions specific to Triple Private cabins.

SALES: voyages@oneoceanexpeditions.com
MEDIA: media@oneoceanexpeditions.com
AUSTRALIA/NZ: +61 (0)2 9119 2228
NORTH & SOUTH AMERICA: +1 855 416 2326
UK, EUROPE & REST OF THE WORLD: +44 (0)117 951 3203