

The Sisterships: *L'Austral, Le Boréal, Le Soléal* and *Le Lyrial*

With their slender lines and understated decor, these four ships are faithful to the PONANT ethos: travel on ships on a human scale where a discreet and stylish atmosphere reigns.

davide guglielmi
contemporary art of travel

#collectingmoments



Length: 142 m
Width: 18 m
Draft: 4.7 m
Average cruising speed: 14 knots

Number of staterooms and suites: 122 or 132
Crew members: 145
Installed electrical power: 6,400 KW
Years of delivery: from 2009 to 2015



The Sisterships series symbolises the company's wish to build the ideal cruise ship and to **propagate the French lifestyle** across the world. Being yachts on a human scale, *L'Austral*, *Le Boréal*, *Le Soléal* and *Le Lyrial* can gain access to isolated places and ports reserved for small vessels. They are thus faithful to the PONANT DNA: **exploring the world** with constantly renewed curiosity.





1



2



3



4

1. *Le Boréal*

1. Spa, *Le Lyrial*

2. The grill-restaurant, deck 6, *Le Lyrial*

3. The swimming pool on deck 6

4. The Observatory lounge aboard *Le Boréal*

5. The library

3. Prestige stateroom balcony aboard *Le Boréal*

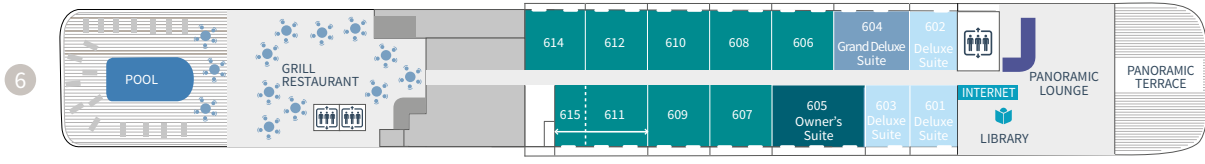
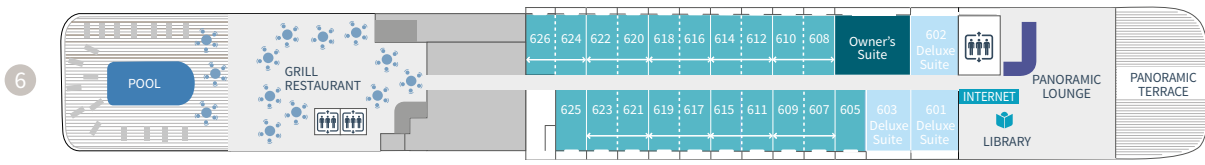
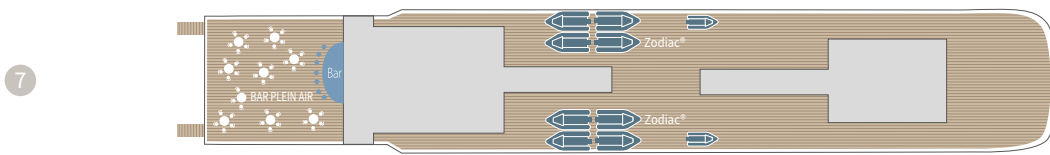
4. Prestige stateroom aboard *L'Austral*

Amenities

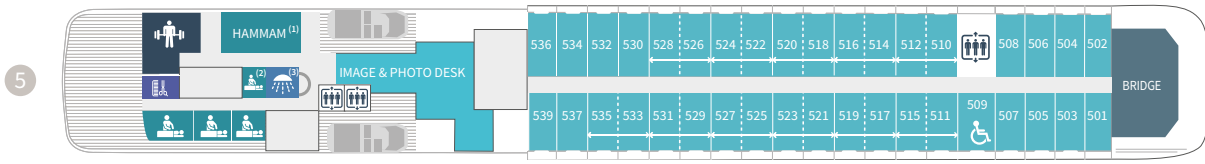
- Individually controlled airconditioning
- Stateroom layout: king-size bed, or twin beds, communicating Staterooms available (Children welcome)
- Minibar
- Flat-screen satellite TV
- Bose Bluetooth speaker
- Desk with stationery
- Safe

- Hermès bath products
- Dressing table, bath robes, hairdryer
- Direct line telephone
- 110V American (two flat pins)/220V European (round sockets with two round pins)
- 24hr room service
- Inclusive internet access Wifi*

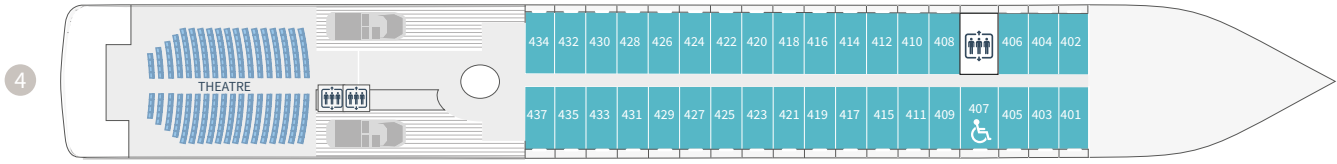
**Depending on the navigation areas, the Wifi may not be accessible for reasons beyond our control.*



Le Lyréal



Configuration: L'Austral: ⁽¹⁾ Locker ⁽²⁾ Hamman ⁽³⁾ Locker - Le Boréal; ⁽¹⁾ Massage ⁽²⁾ Hamman ⁽³⁾ Locker - Le Soléal; ⁽¹⁾ Hamman ⁽²⁾ Locker ⁽³⁾ Locker.

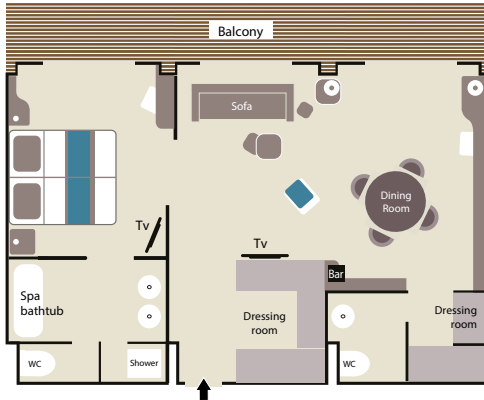


- Owner's Suite
Deck 6
- Grand Privilege Suite
Deck 6 (Le Lyréal)
- Privilege Suites
Deck 6 (Le Lyréal)
- Prestige Suites
Deck 6 - 5 (except Le Lyréal)
- Grand Deluxe Suites
Deck 6 (Le Lyréal)
- Deluxe Suites
Deck 6
- Prestige Staterooms
Deck 4 - 5 - 6
- Deluxe Staterooms
Deck 3
- Superior Staterooms
Deck 3

Discover your Stateroom

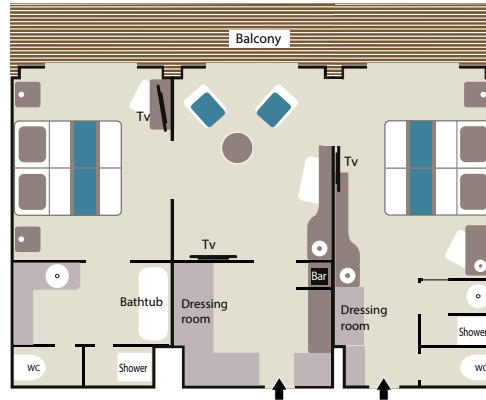
OWNER'S SUITE aboard *Le Lyrial*

(55 sq.m/581 sq.ft + 12 sq.m/129 sq.ft private balcony with sliding bay windows)



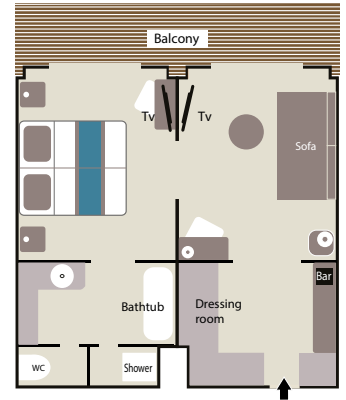
GRAND PRIVILEGE SUITE aboard *Le Lyrial*

(55 sq.m/581 sq.ft + 12 sq.m/129 sq.ft private balcony with sliding bay windows)



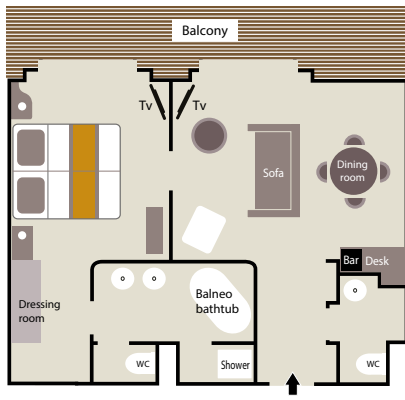
8 PRIVILEGE SUITES aboard *Le Lyrial*

(37 sq.m/388 sq.ft + 8 sq.m/86 sq.ft private balcony with sliding bay windows)



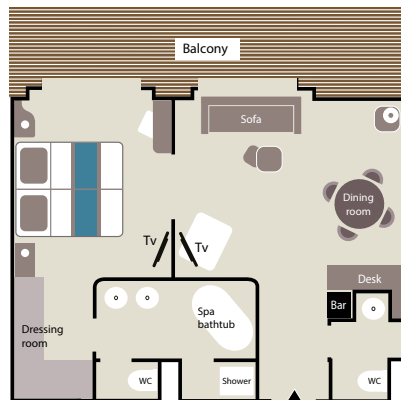
OWNER'S SUITE

(45 sq.m/484 sq.ft + 9 sq.m/97 sq.ft private balcony with sliding bay windows)



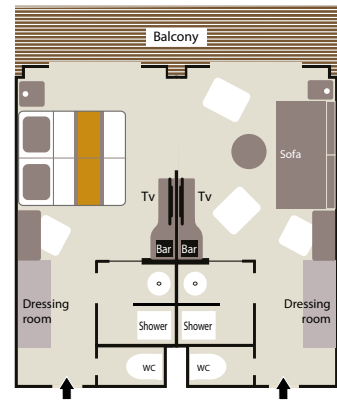
GRAND DELUXE SUITE aboard *Le Lyrial*

(45 sq.m/484 sq.ft + 10 sq.m/108 sq.ft private balcony with sliding bay windows)



20 PRESTIGE SUITES - 11 aboard *Le Lyrial*

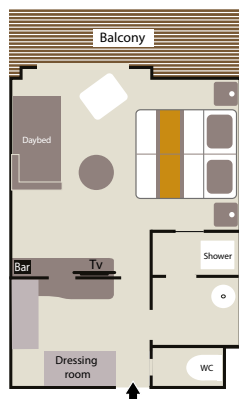
(37 sq.m/398 sq.ft + 8 sq.m/86 sq.ft private balcony with sliding bay windows)



Prestige Suites aboard *Le Boréal* & *Le Soléal*:
1 shower and 1 bathtub.

3 DELUXE SUITES

(27 sq.m/290 sq.ft + 6 sq.m/64 sq.ft private balcony with sliding bay window)

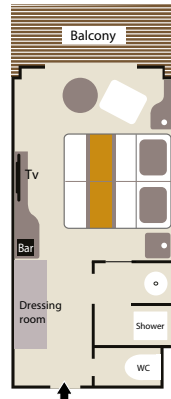


Deluxe Suites aboard *Le Boréal*:
1 shower and 1 bathtub

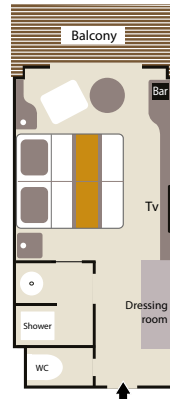
92 PRESTIGE STATEROOMS - 73 aboard *Le Lyrial*

(18.5 sq.m/200 sq.ft + 4 sq.m/43 sq.ft private balcony with sliding bay window)

Deck 4



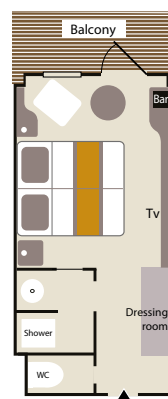
Deck 5-6



Prestige Staterooms aboard *Le Boréal* & *Le Soléal*,
decks 5 & 6: 1 shower or bathtub depends on cabins

28 DELUXE STATEROOMS

(18 sq.m/200 sq.ft + 4 sq.m/43 sq.ft private balcony with French window)



8 SUPERIOR STATEROOMS

(21 sq.m/226 sq.ft)

